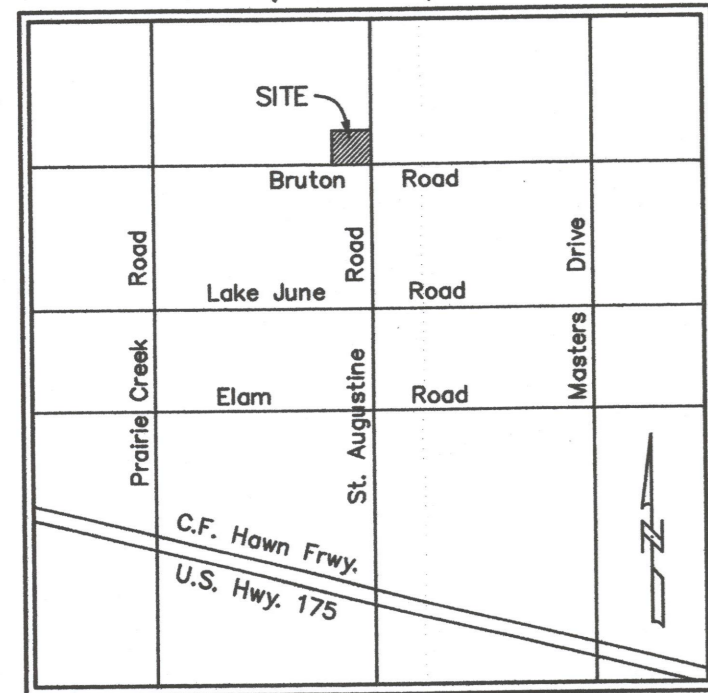
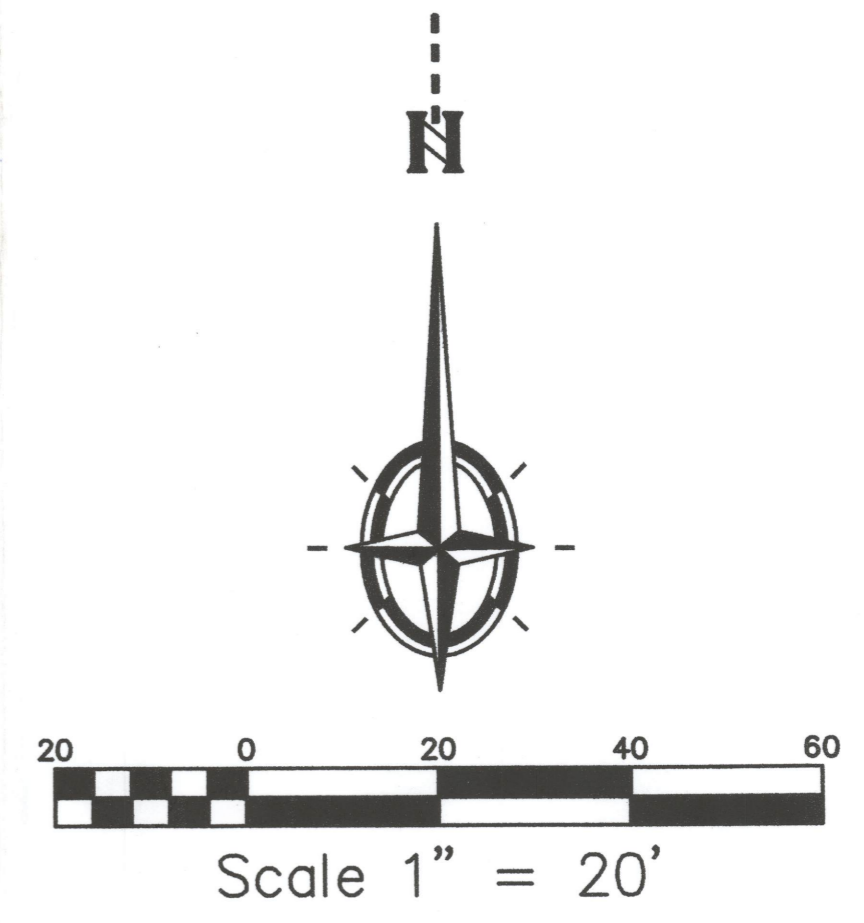
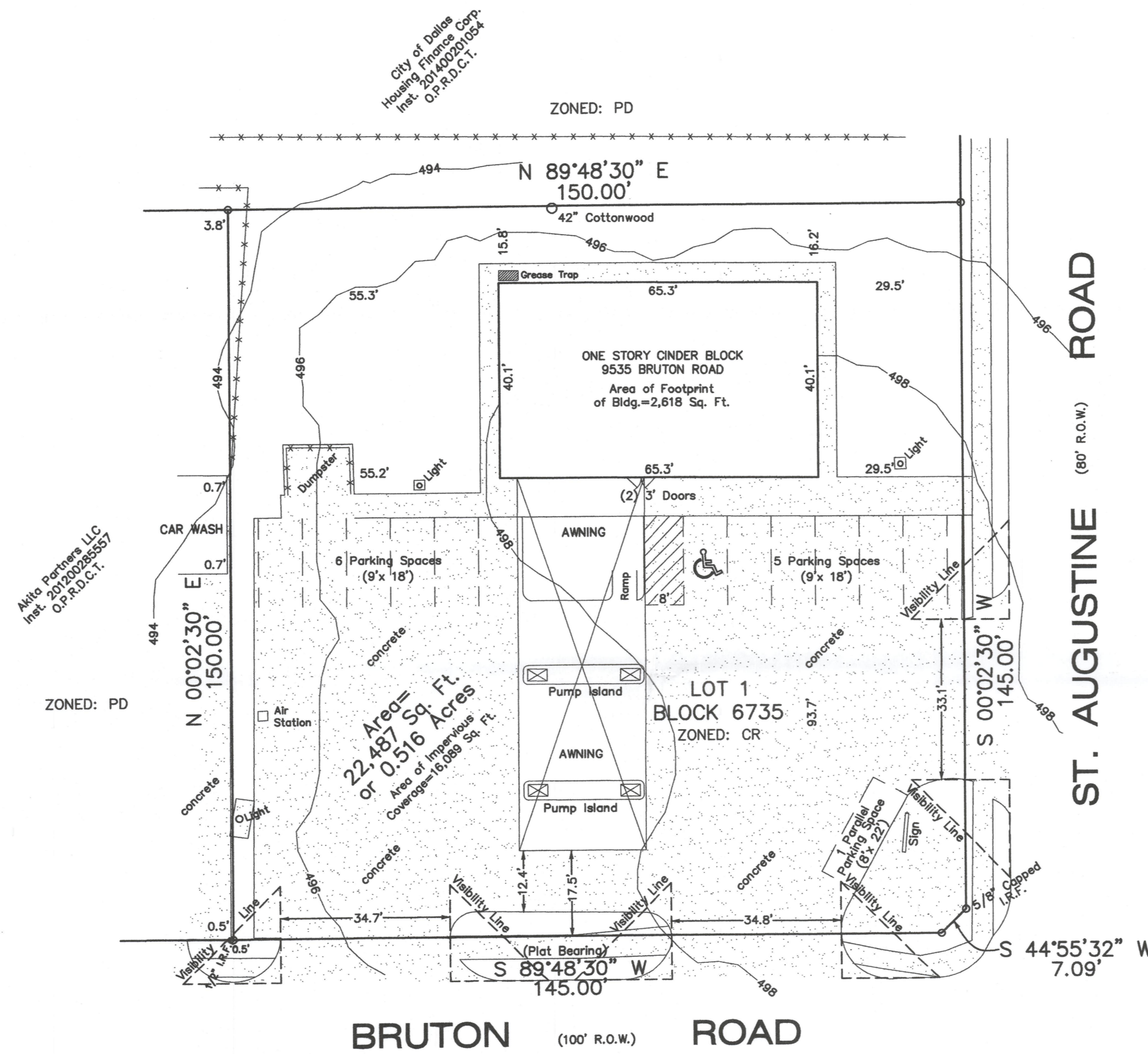


Vicinity Map
(not to scale)



SITE PLAN



SITE PLAN
ADAMS FOOD MART
9535 BRUTON ROAD
DALLAS, TX. 75227
Lot 1, Block 6735
Stop and Go Addition No. 1
Vol. 82067, Pg. 986 M.R.D.C.T.
 Together with Certificate of Correction recorded
 in Volume 82224, Page 3049, R.P.R.D.C.T.
 Date Prepared: December 2, 2015

PARKING TABLE

REQUIRED PARKING	PROPOSED PARKING
12 Regular Parking Spaces	12 Regular Parking Spaces
1 Handicap Parking Space	1 Handicap Parking Space
13 Total Parking Spaces	13 Total Parking Spaces

LEGEND

	CONCRETE PAVEMENT
	ASPHALT PAVEMENT
	IRON ROD FOUND
	CAPPED IRON ROD SET
	FENCE LINE
	Official Public Records, Dallas County, Texas
	Map Records, Dallas County, Texas
	Real Property Records, Dallas County, Texas

NOTE: Property not situated in a 100-year Flood Plain area (Zone X) per FIRM Community Panel No. 48113C0510 K. Map Revised: July 7, 2014.

ZONING CASE NO.

 SURVEYING ASSOCIATES 1018 SOUTH BECKLEY AVE. DALLAS, TEXAS 75203	 Texas Society of Professional Surveyors	DRAWN BY Lynn L.
		PHONE (214) 948-3324 FAX (214) 946-7540 Email: Brychlik@SWBell.net
		15-621-L
		JOB NO.

2150-243